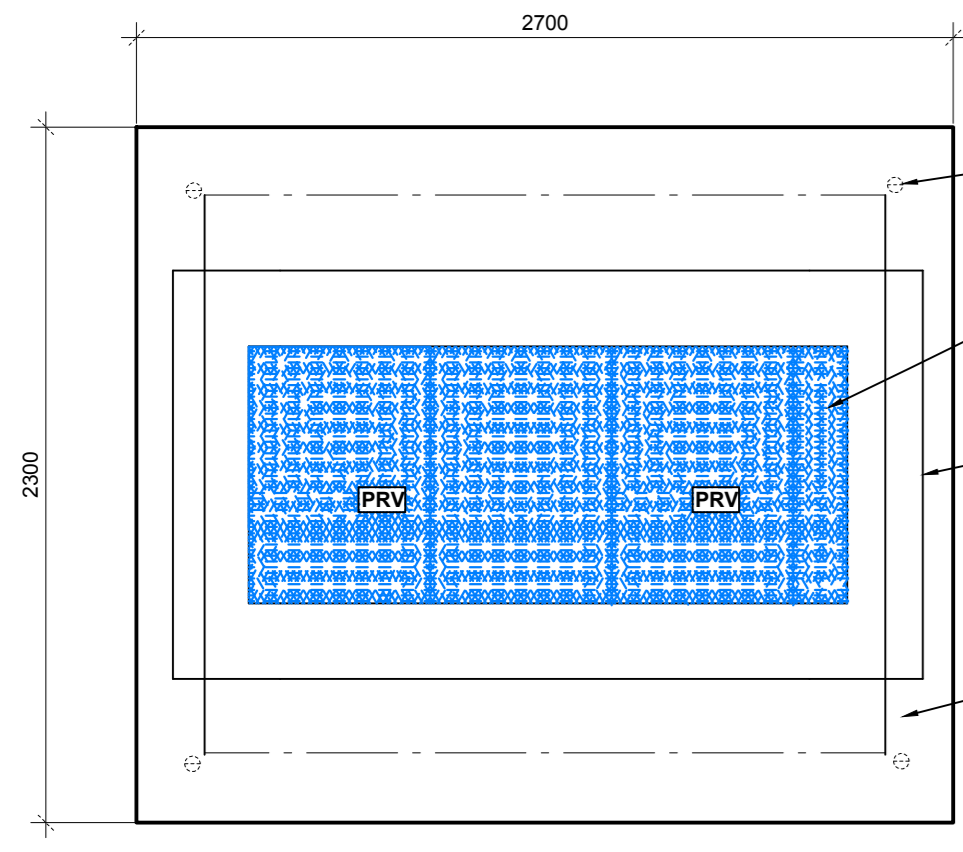
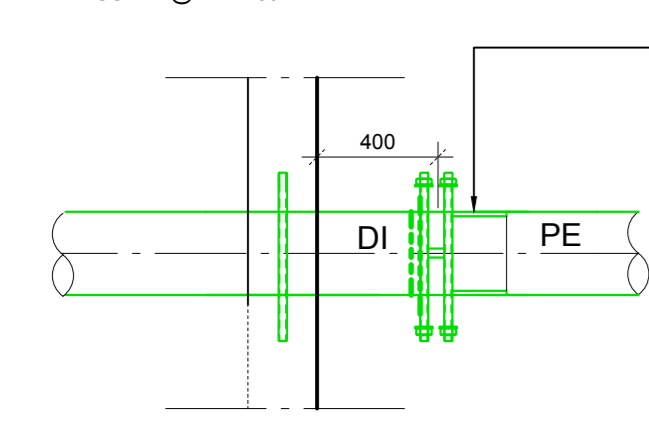


NOTES

- 1. THIS DRAWING IS TO BE READ IN CONJUNCTION WITH ALL ENGINEERS & ARCHITECTS DRAWINGS. DIMENSIONS ONLY (NOT SCALING) TO BE USED, WHERE A CONFLICT OF INFORMATION EXISTS OR IF IN ANY DOUBT - AS2.
- 2. CONSULTANTS TO BE INFORMED IMMEDIATELY OF ANY DISCREPANCIES BEFORE WORK PROCEEDS.



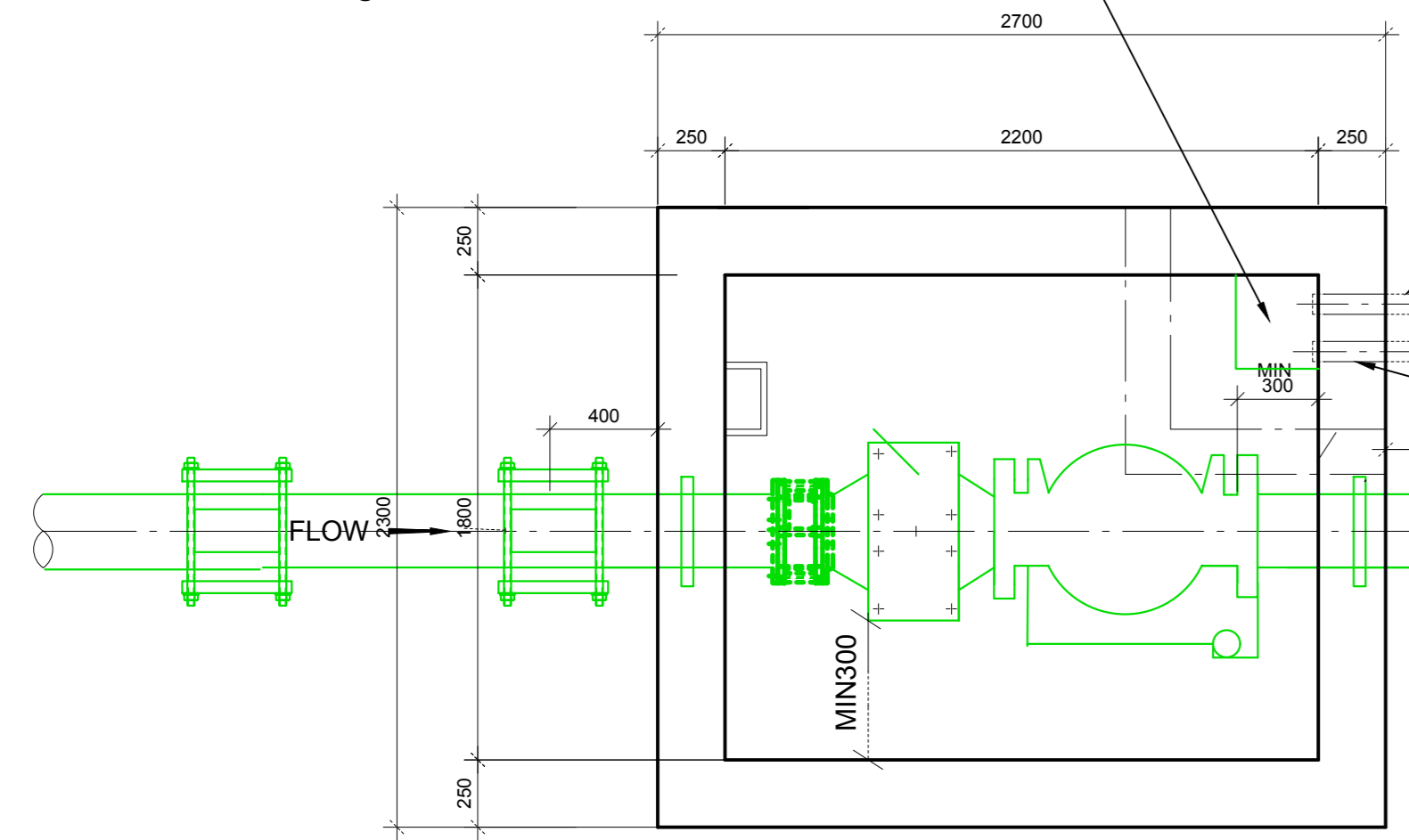
ROOF PLAN
SCALE @ A0: 1:25
SCALE @ A2: 1:50



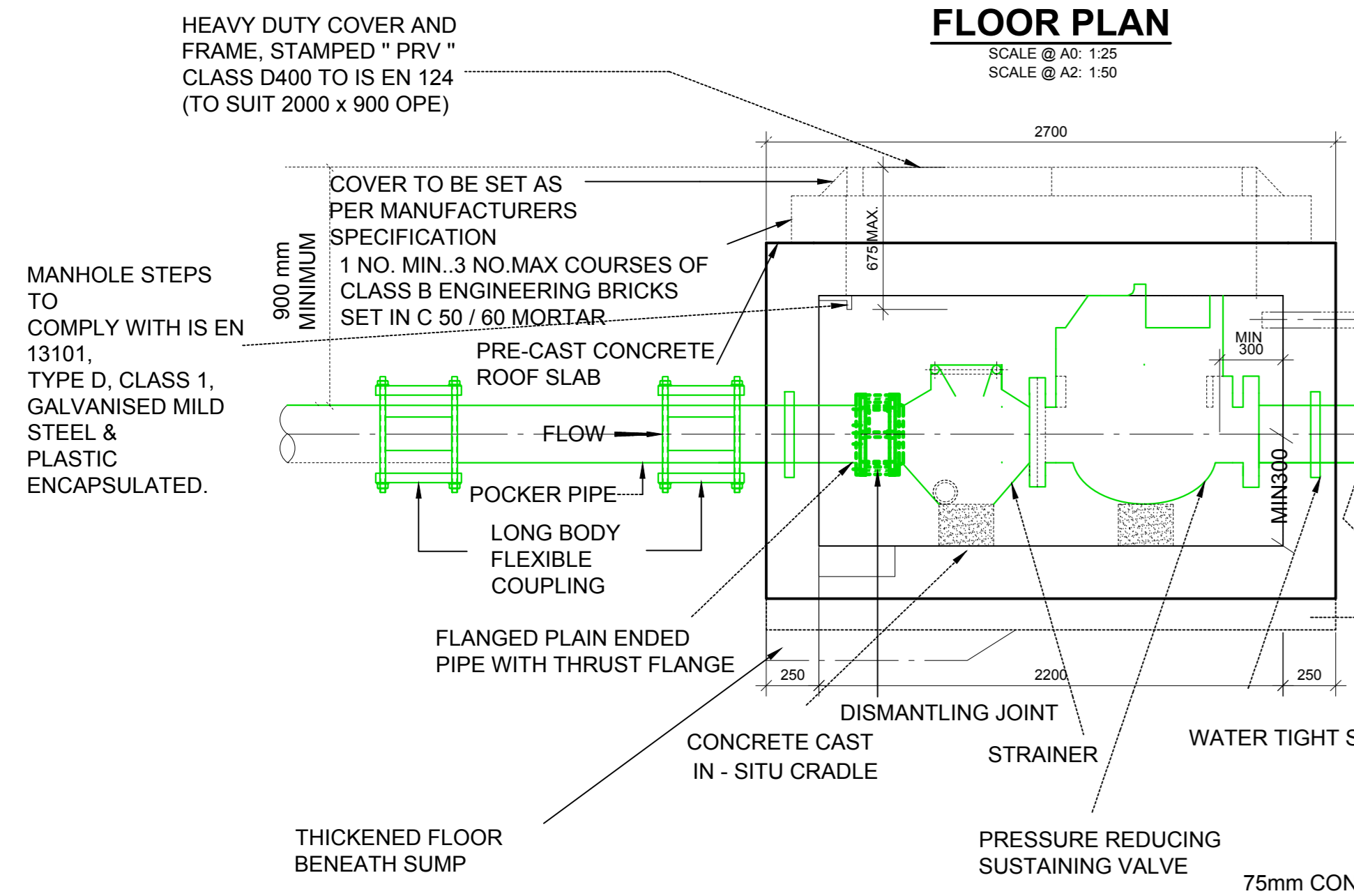
PE TO DI DETAIL
SCALE @ A0: 1:25
SCALE @ A2: 1:50

STUB FLANGE WITH BACKING RING

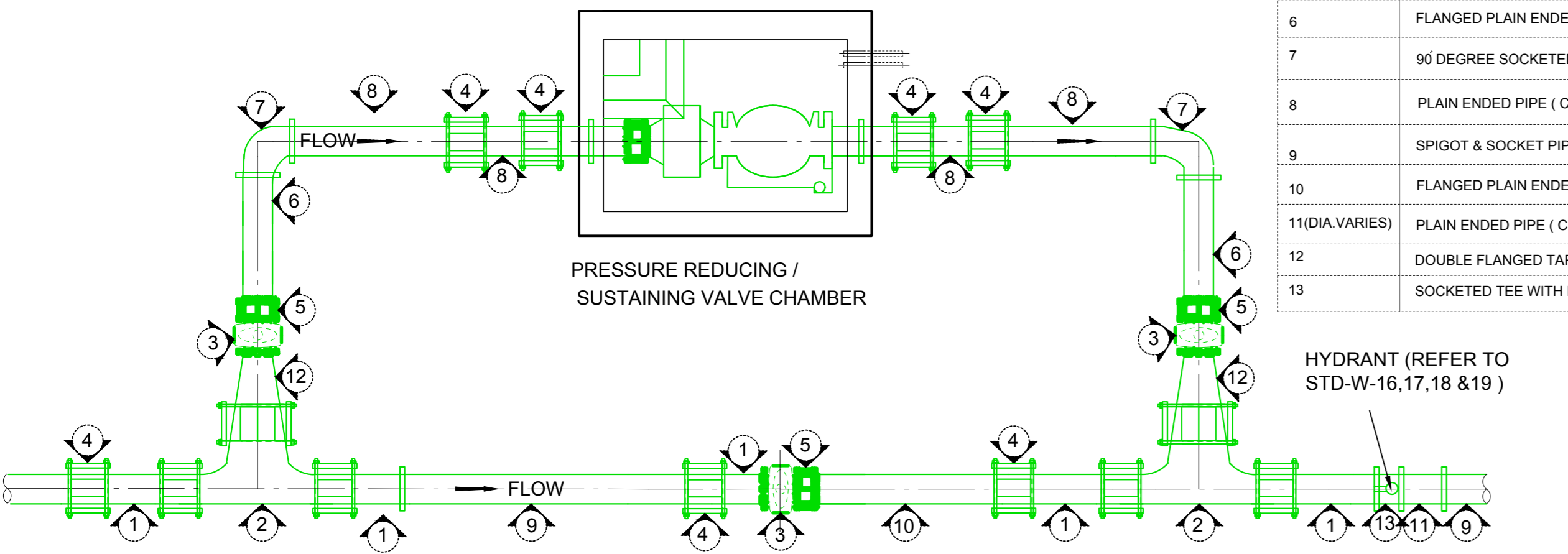
400 X 400 X 200 mm DEEP SUMP



FLOOR PLAN
SCALE @ A0: 1:25
SCALE @ A2: 1:50



A1 SECTION
SCALE @ A0: 1:25
SCALE @ A2: 1:50

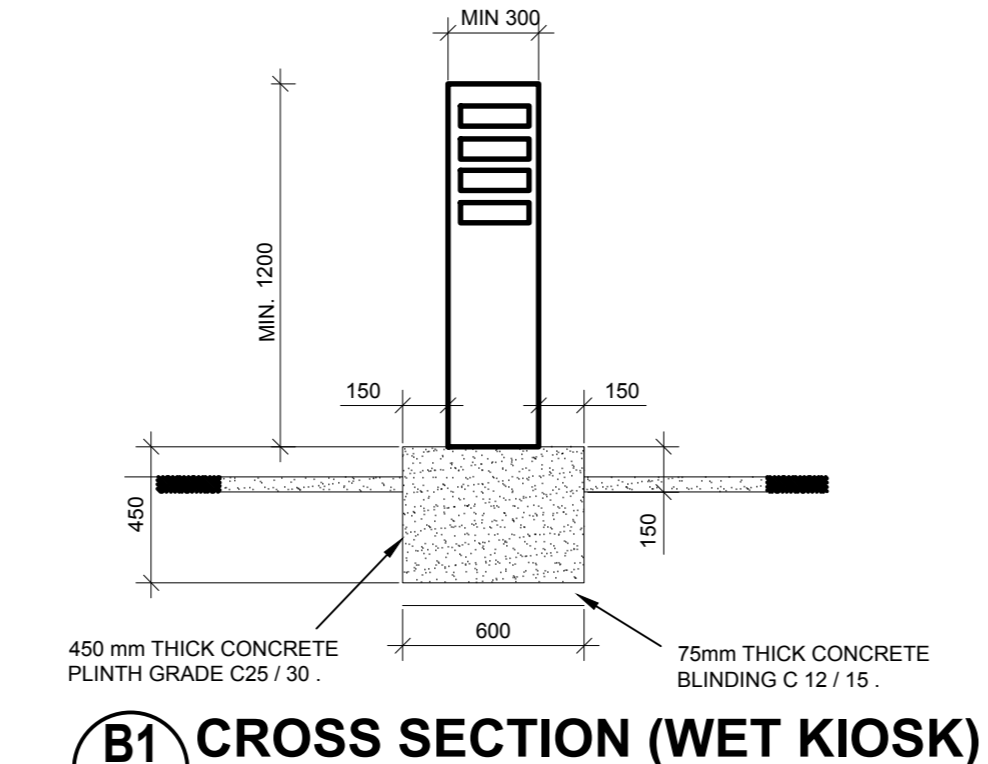


TYPICAL BYPASS ARRANGEMENT

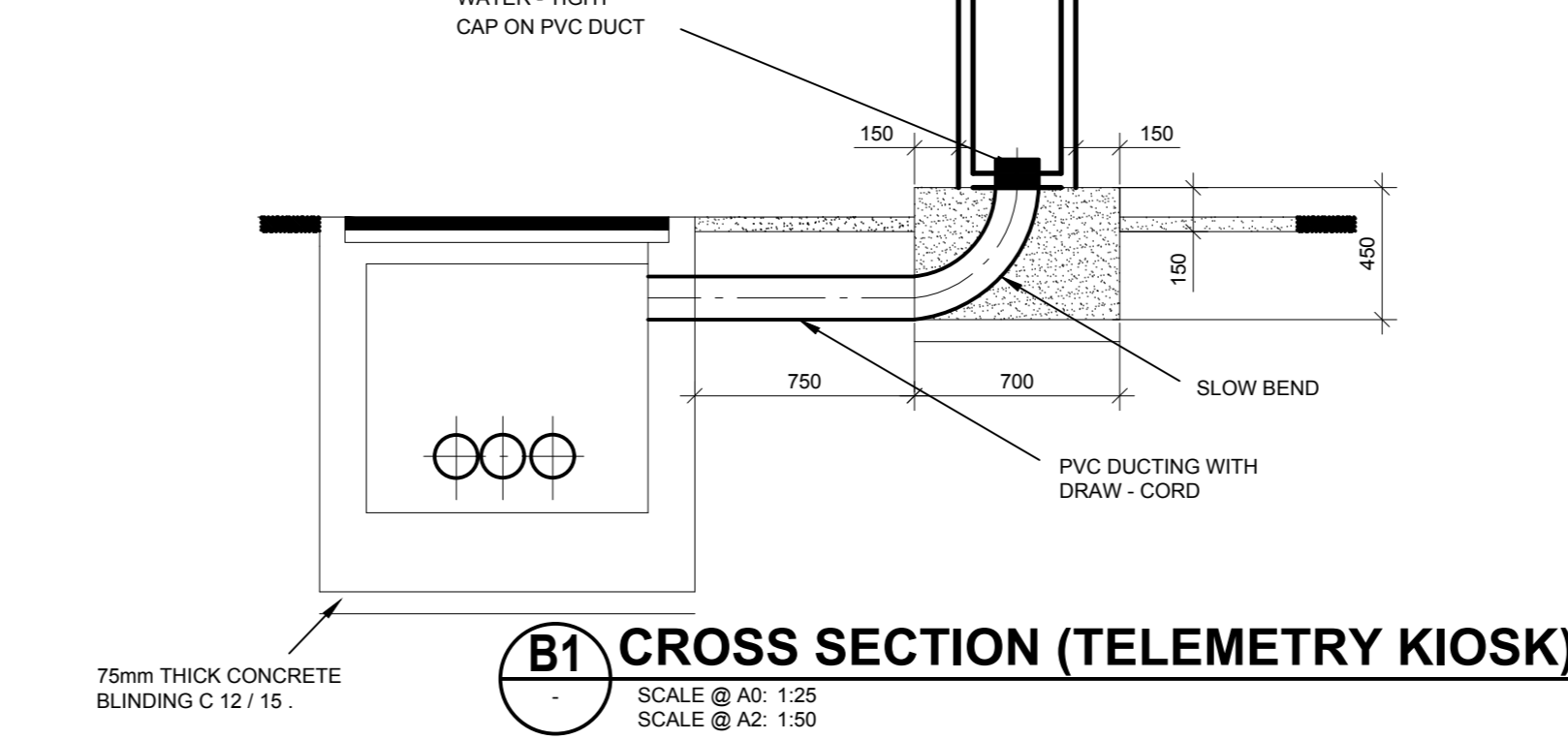
A PRESSURE REDUCING / SUSTAINING VALVE (P.R.V. / P.S.V.) CHAMBER

1. ALL DIMENSIONS ARE IN MILLIMETRES (mm) UNLESS NOTED OTHERWISE.
2. STRUCTURAL DESIGN AND REINFORCEMENT DETAIL TO BE PROVIDED BY THE DEVELOPER AND SUBMITTED TO IRISH WATER FOR REVIEW.
3. CONCRETE FOR PRESSURE REDUCING / SUSTAINING CHAMBER TO BE C30 / 37.
4. PRECAST UNITS MAY BE USED SUBJECT TO APPROVAL FROM IRISH WATER.
5. PRESSURE REDUCING VALVES REQUIRE A MINIMUM LENGTH OF PIPE EQUIVALENT TO 5 TIMES THE DIAMETER, ON EACH SIDE OF THE VALVE TO BE COMPLETELY FREE OF FITTINGS, VALVES, REDUCERS ETC.
6. P.R.V. / P.S.V. CHAMBER SHALL BE COVERED WITH APPROVED HEAVY DUTY METAL COVERS TO IS EN 124 RATING D400. COVER AND FRAME SHALL BE SUITABLE FOR ROAD AND TRAFFIC CONDITIONS AND IS SUBJECT TO APPROVAL FROM IRISH WATER.
7. 200mm ALL ROUND, 100mm DEEP CONCRETE PLINTH WITH PROTECTIVE STAINLESS STEEL METAL BAND AROUND COVERS IN GRASS AREAS.
8. ANTI CORROSION TAPE TO BE PROVIDED AROUND BURIED FLANGES.
9. THRUST BLOCKS (NOT SHOWN ON DRAWING), TO BE PROVIDED AS PER STANDARD DRAWING STD-W-28 AT ALL TEES, BENDS, TAPERS, DEAD ENDS AND PIPES AT STEEP SLOPES.
10. DUCTILE IRON PIPES AND FITTINGS TO BE IN ACCORDANCE WITH IS EN 545. PE PIPES AND FITTINGS TO BE IN ACCORDANCE WITH IS EN 12201:2011.
11. ALL CHAMBERS TO BE CHECKED FOR UPLIFT BY THE DEVELOPER, BASED ON GROUND CONDITIONS WITHIN THE SITE. SHOULD ANTI FLOTATION MEASURES BE REQUIRED THEY SHALL BE SUBJECT TO APPROVAL FROM IRISH WATER.
12. ALL CONCRETE TO BE IN ACCORDANCE WITH IS EN 206.
13. PIPEWORK TO BE DOWNSIZED IF REQUIRED TO ACCOMMODATE THE REQUIRED RANGE OF PRESSURE REDUCTION.

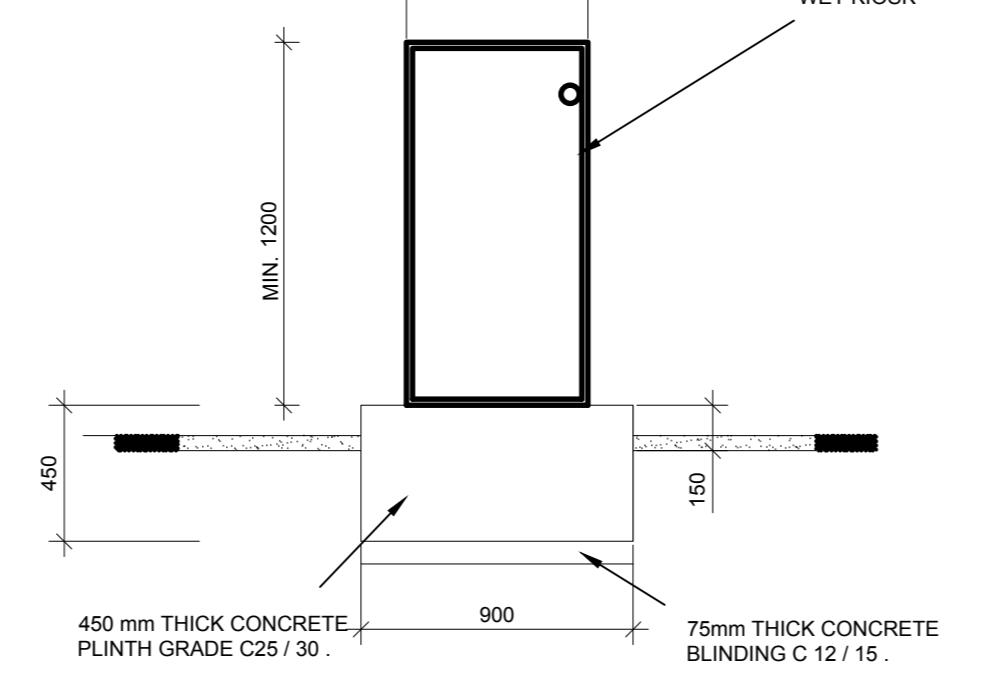
1. ALL DIMENSIONS ARE IN MILLIMETRES (mm) UNLESS NOTED OTHERWISE.
2. THE KIOSK SHALL BE LOCATED OFF THE FOOTPATH SO AS NOT TO IMPED E PEDESTRIANS AND POSITIONED SO AS TO FACILITATE SAFE ACCESS FOR MAINTENANCE PERSONNEL.
3. KIOSK TO BE CONSTRUCTED FROM THERMOSETTING U.V. & WEATHER RESISTANT PLASTIC POWDER COATED & HOT DIPPED GALVANISED MILD STEEL PLATE (MINIMUM 4 mm THICKNESS) TO BS EN 1461 STAINLESS STEEL OR NON-METALLIC MATERIALS: SUCH AS GLASS REINFORCED PLASTIC (GRP). MAY BE USED AS AN ALTERNATIVE KIOSK MATERIAL, PARTICULARLY IN SEVERE ENVIRONMENTS. SUBJECT TO AGREEMENT WITH IRISH WATER.
4. KIOSK TO HAVE SINGLE OR DOUBLE STEEL/GRP DOORS WITH MULTIPLE LOCKS TO UPS 1+175 BS EN 1027. MINIMUM DOUBLE LOCKS WITH BOLTS THAT ENGAGE INTO THE SILL & HEADER AS WELL AS BETWEEN THE TWO LEAVES OR LEAF & FRAME. LEADING EDGE OF LEAVES TO HAVE EITHER REINFORCED EDGES OR FITTED WITH ASTRAGALS.
5. COLOUR TO BE HOLLY GREEN BS 4800 14 C 39 INTERIOR FINISH TO BE WHITE UNLESS APPROVED BY IRISH WATER.
6. THE QUALITY OF KIOSK CONSTRUCTION SHALL ENSURE THAT THE FOLLOWING IS ACHIEVED:
 - (a) A THERMAL TRANSMITTANCE OF 1.5 W PER m² K.
 - (b) A FIRE RESISTANCE (RETENTION OF STABILITY, INTEGRITY AND INSULATION) EQUIVALENT TO CLASS 2 OF BS 476, WHEN TESTED IN ACCORDANCE WITH BS 476 FOR A PERIOD EXCEEDING 30 MINUTES.
 - (c) AN I.P.F. RATING OF IP 65 OR EQUIVALENT.
7. KIOSK TO BE BOLTED TO THE PLINTH THROUGH A BOTTOM FLANGE WITH GALVANISED MILD STEEL OR STAINLESS STEEL ANCHOR BOLTS.
8. THE BOTTOM FLANGE SHALL BE SEALED ON A NEOPRENE GASKET AND SEALED WITH MASTIC.
9. REAR WALL SHALL BE REINFORCED WITH STAINLESS STEEL SECTIONS TO WHICH A MARINE PLY WOOD, 18 mm THICK BOARD IS FIXED.
10. THE INTERNAL LAYOUT OF THE KIOSK SHALL BE SUBJECT TO IRISH WATER APPROVAL.
11. TELEMETRY DUCTING TO BE IN ACCORDANCE WITH BS 4860 AND BS EN 1401.
12. ELECTRICAL REQUIREMENTS TO BE IN ACCORDANCE WITH EBS SPECIFICATION.
13. THE ROOF OF THE KIOSK SHALL BE REMOVABLE (BOLTS) TO FACILITATE BACKBOARD REMOVAL.
14. ALL EXPOSED PIPEWORK TO BE ADEQUATELY INSULATED WITH PIPE LAGGING.
15. A 750 mm WIDE X 100 mm THICK FOOTPATH OF C 25 / 30 CONCRETE ON 50 mm SAND BLINDING ON 300 mm CLAUSE 804 GRANULAR MATERIAL TO BE PROVIDED AROUND KIOSK.
16. ALL CONCRETE TO BE IN ACCORDANCE WITH IS EN 206.



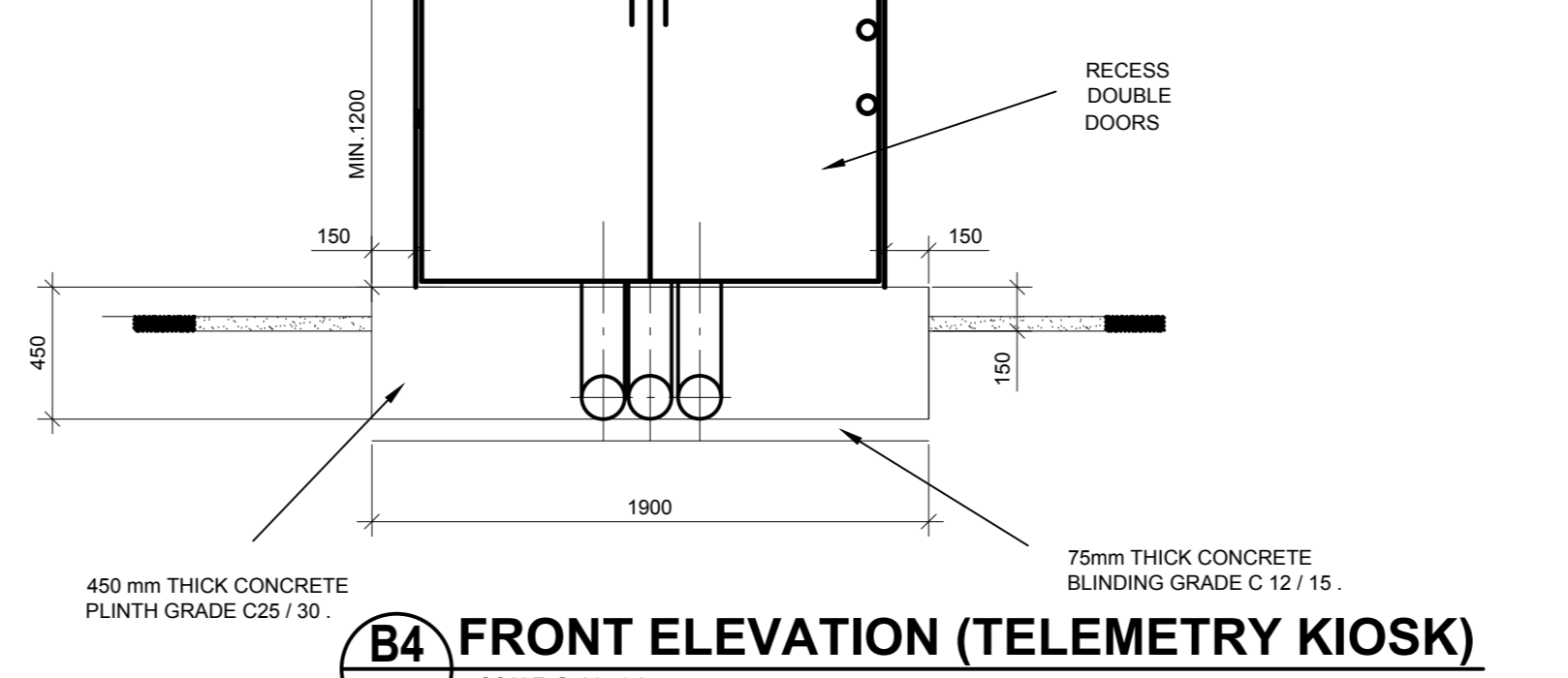
B1 CROSS SECTION (WET KIOSK)
SCALE @ A0: 1:25
SCALE @ A2: 1:50



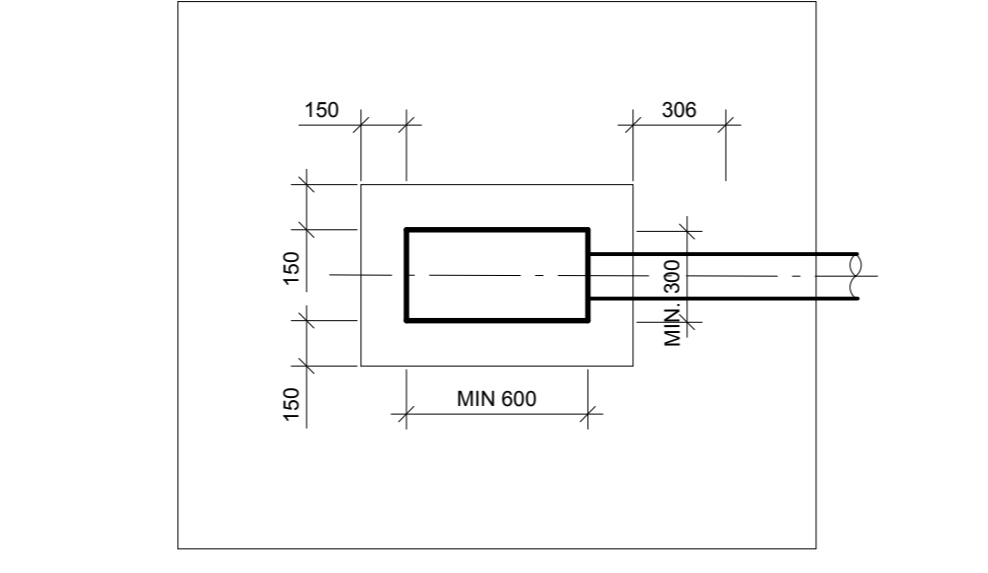
B1 CROSS SECTION (TELEMETRY KIOSK)
SCALE @ A0: 1:25
SCALE @ A2: 1:50



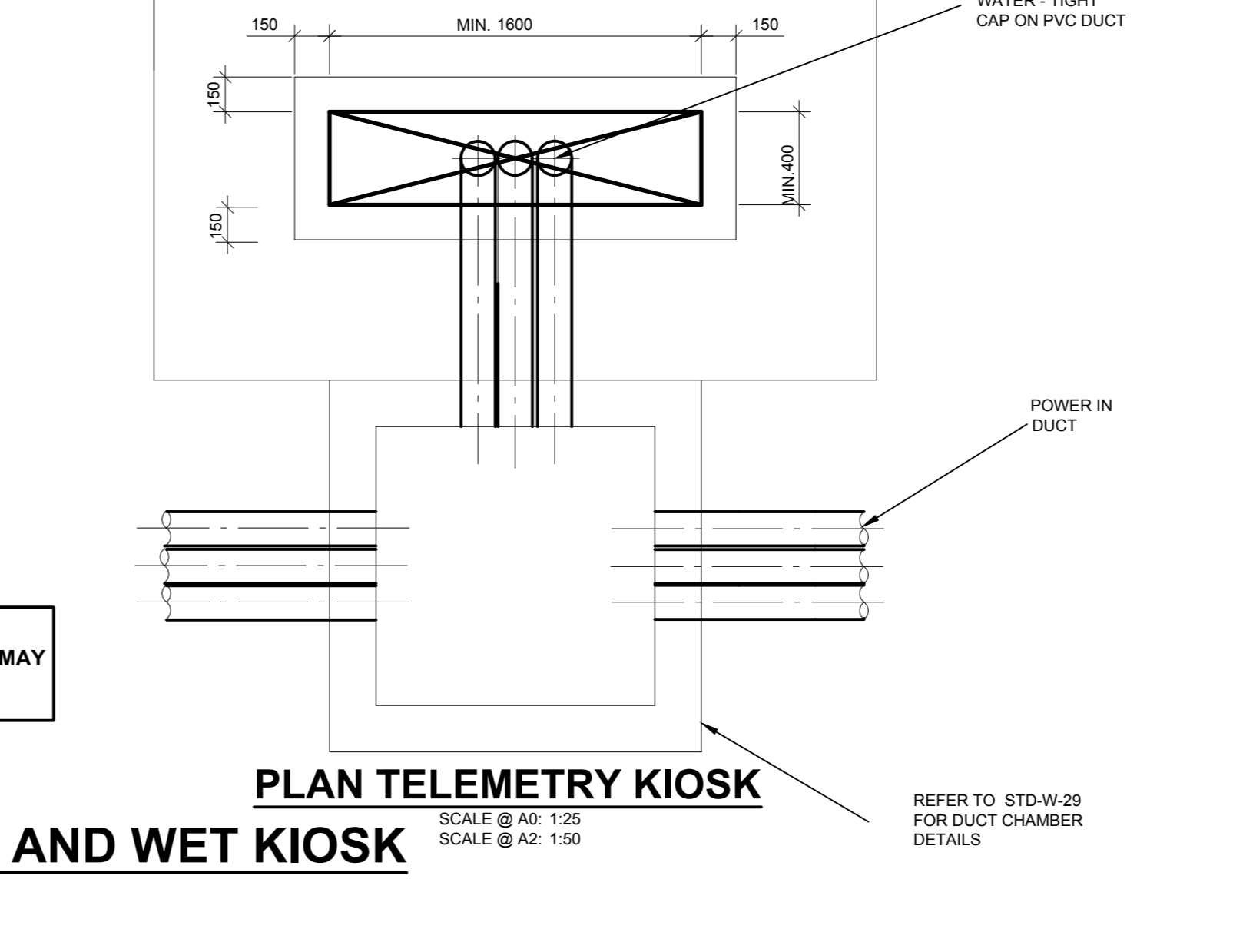
B3 FRONT ELEVATION (WET KIOSK)
SCALE @ A0: 1:25
SCALE @ A2: 1:50



B4 FRONT ELEVATION (TELEMETRY KIOSK)
SCALE @ A0: 1:25
SCALE @ A2: 1:50



PLAN WET KIOSK
SCALE @ A0: 1:25
SCALE @ A2: 1:50



PLAN TELEMETRY KIOSK
SCALE @ A0: 1:25
SCALE @ A2: 1:50

NOTE
ALL KIOSK DIMENSIONS ARE MINIMUM DIMENSIONS & MAY VARY TO SUIT THE KIOSK REQUIREMENT.

B TELEMETRY AND WET KIOSK

MARK NO.	DESCRIPTION
1	FLANGED PLAIN ENDED PIPE (STANDARD)
2	ALL FLANGED TEE
3 (DIA VARIES)	SLUICE VALVE
4 (DIA VARIES)	LONG BODY FLEXIBLE COUPLING
5 (DIA VARIES)	DISMANTLING JOINT
6	FLANGED PLAIN ENDED PIPE (CUT TO SUIT)
7	90 DEGREE SOCKETED BEND
8	PLAIN ENDED PIPE (CUT TO SUIT)
9	SPIGOT & SOCKET PIPE (STANDARD)
10	FLANGED PLAIN ENDED PIPE (CUT TO SUIT)
11(DIA VARIES)	PLAIN ENDED PIPE (CUT TO SUIT)
12	DOUBLE FLANGED TAPER (WHERE REQUIRED)
13	SOCKETED TEE WITH FLANGED BRANCH&HYDRANT

ISSUE	DATE	DESCRIPTION
PL5	18.04.19	ISSUED FOR PLANNING
PL4	18.03.19	ISSUED FOR PLANNING
PL3	18.01.19	ISSUED FOR PLANNING
PL2	07.01.19	DRAFT ISSUED FOR PLANNING

PLANNING

BM
BARRETT MANDRY
Consulting Engineers, Civil, Structural, Project Management & Environmental Engineering

ACEI
The Institution of Structural Engineers

CLIENT	PROJECT TITLE
CONCORDE	CONCORDE RESIDENTIAL DEVELOPMENT
MODEL NUMBER	MODEL REV.
CCR-DM-00-ZZ-DR-C-1010	P1
DRAWING TITLE	DATE
STANDARD WATERMAIN DETAILS (SHEET 2 OF 2)	18.232
DRAWING NO.	ISSUE
CCR-DM-00-ZZ-DR-C-1222	PL5